

An example of recultivation Keviesu bog - Latvia

Bernd Hofer



Hofer & Pautz GbR

International Peatland Society

Deutsche Gesellschaft für Moor- und Torfkunde

NABU Klimafond



Development of a NABU Klimafond climate project

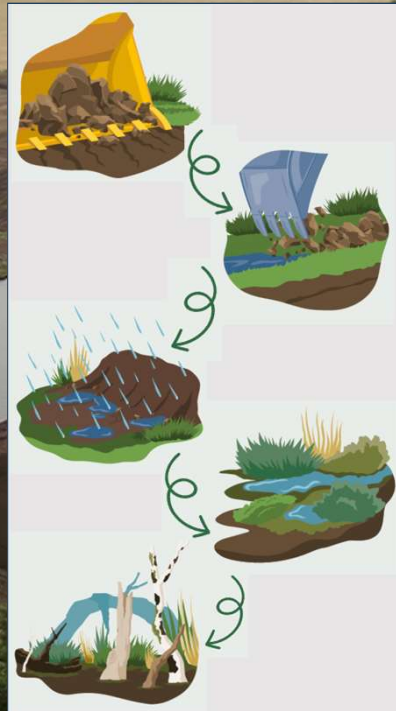
- Project start April 2022
- Collection of the baseline data by fall 2022
- Start of monitoring at the end of 2022
- Application for the change of after use 2023/24
- Execution of the technical work 2023/24
- Project completion 2025



NABU Klimafond 25 Million € in 5 years time

Revitalizing peatlands - how does it work?

- Remove top soil layer
- Stop dewatering
- Collect rainwater
- Planting peat moss
- Peatland grows again

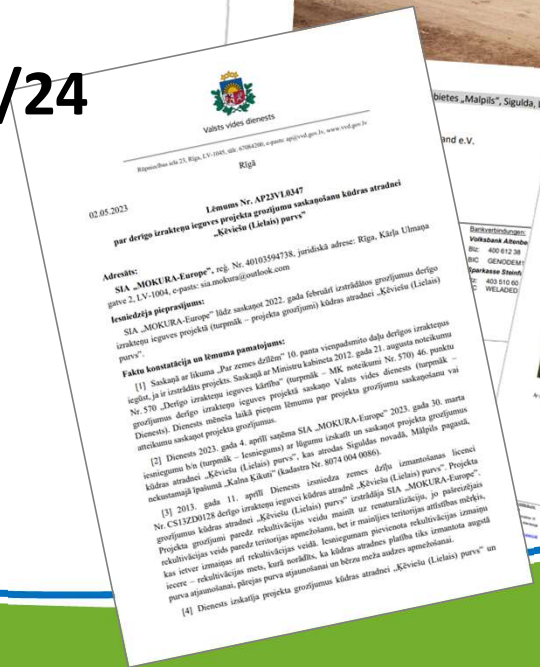
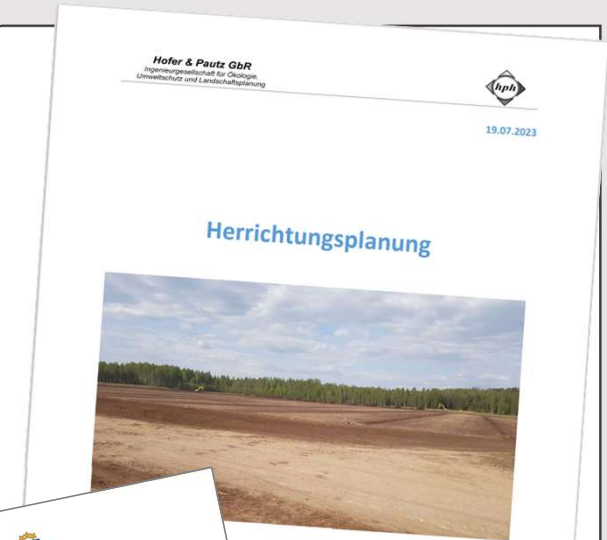


Ahlen-Falkenberger Moor
200 ha



Development of a NABU Kilmafond climate project

- Project start April 2022
- Baseline from fall 2022 to summer 2024
- Start of monitoring at the end of 2022
- Application for the change of after use 2023/24
- Execution of the technical work 2023/24/25
- Project completion 2025



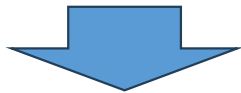
Baseline research

Stratigraphic drillings

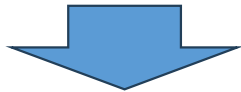
Mire- and groundwater wells

Vegetation mapping

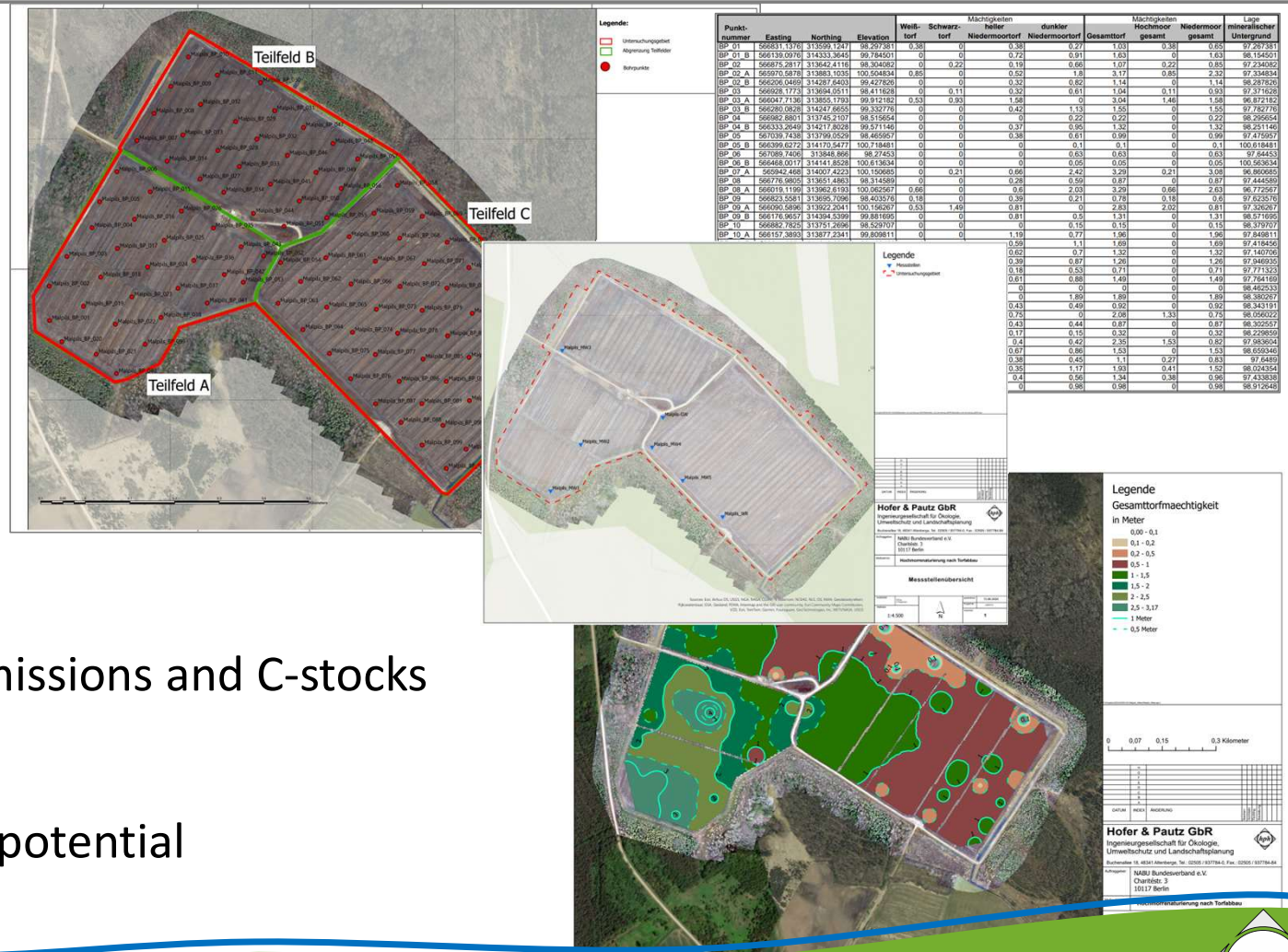
Digital terrain model
(aerial survey / DGPS)



Accounting for current GHG emissions and C-stocks



Analysis of the GHG reduction potential



Technical implementation

Soil removal for leveling

Transport of the removal volumes

Application of raised bog peat

Construction of dams with adjustable overflows

Inoculation with peat moss



Inoculation of Sphagnum mosses





Impressions from Keviesu bog

Danke schön!

